



27 Cherry Wood, Penwortham, PR1 0PJ

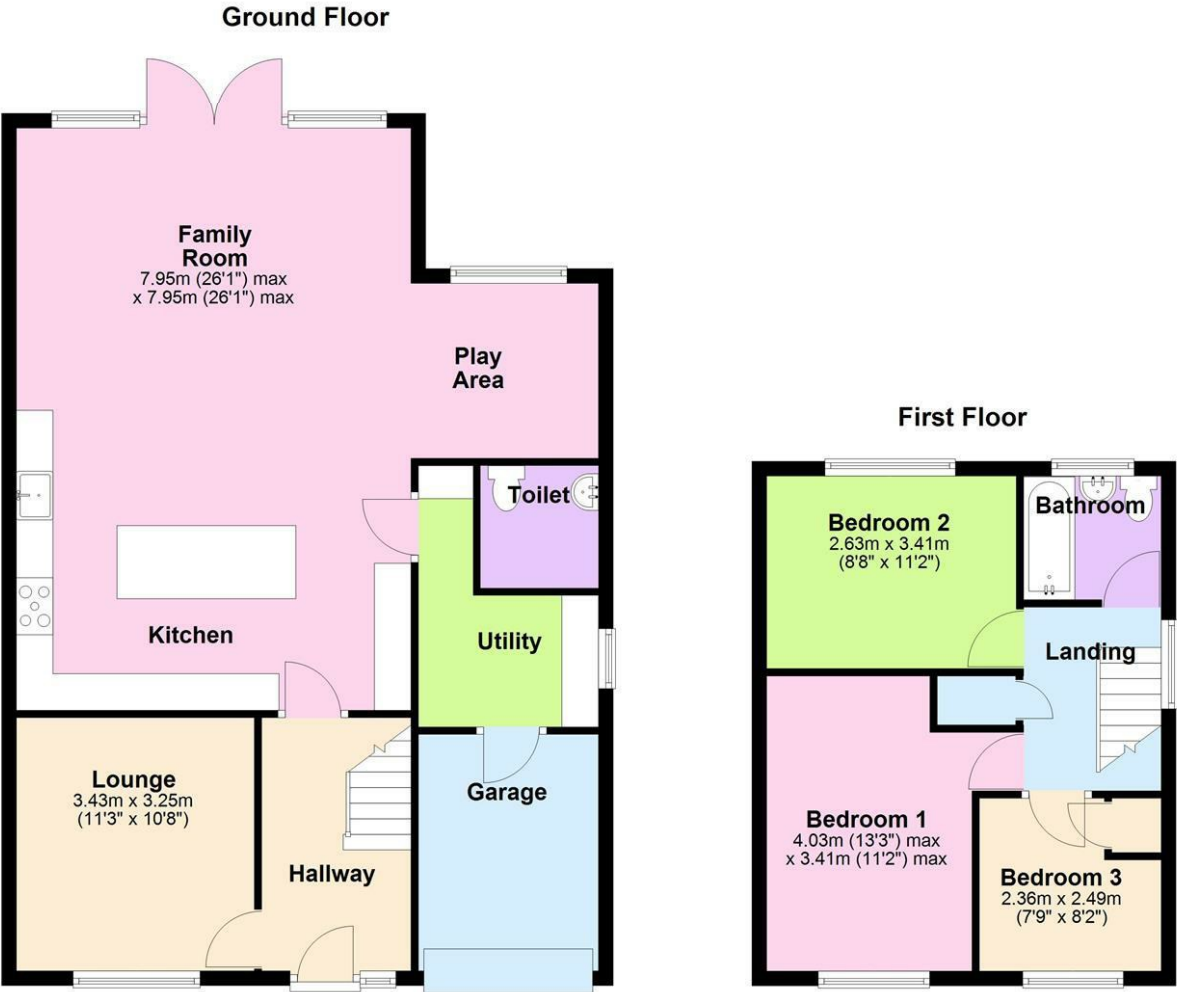
£385,000

Located in the highly sought-after area of Higher Penwortham, this impressive 3-bedroom detached home offers a fantastic family home, set within a spacious plot. Benefitting from no onward chain.

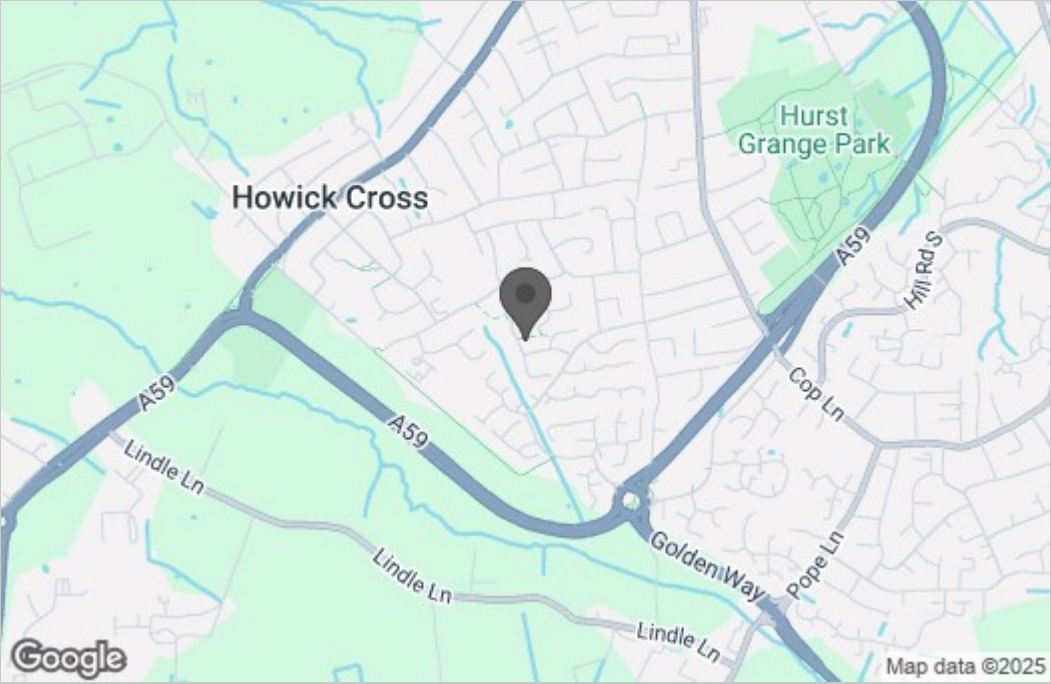
A substantial rear extension has transformed the ground floor, creating a versatile open-plan space incorporating a stylish kitchen, lounge, dining, and play area—perfect for everyday family life and entertaining. There is also a separate lounge for added comfort and privacy. Additional features include a large utility room, downstairs toilet, and a garage offering practical storage and convenience. Upstairs there are three well-proportioned bedrooms and a modern three-piece family bathroom. The rear garden is fantastic, private and spacious, this is an ideal place from families to unwind. To the front there is plenty of off road parking with the house set back from the road. Positioned in a quiet location but still within easy reach of the shops and restaurants on Liverpool Road. With further planning permission already granted for a front porch and garage extension, plus additional 2 single bedrooms above the garage, this house has even more potential to offer a growing family.

This beautifully extended home combines comfort, space and functionality in a popular residential location. This is a great opportunity. If you have any questions or would like to arrange a viewing, please get in touch.

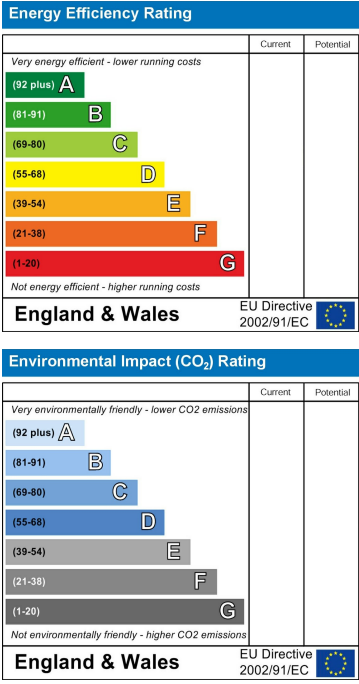
Floor Plan



Area Map



Energy Efficiency Graph



These particulars, whilst believed to be accurate are set out as a general outline only for guidance and do not constitute any part of an offer or contract. Intending purchasers should not rely on them as statements of representation of fact, but must satisfy themselves by inspection or otherwise as to their accuracy. No person in this firm's employment has the authority to make or give any representation or warranty in respect of the property.